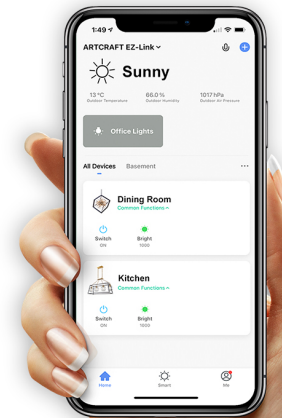


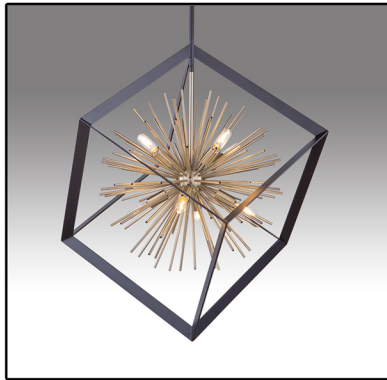


**EZ-LINK**  
SMART LIGHTING

## ***BASIC INFORMATION***



# COLLECTIONS AVAILABLE WITH EZ-LINK SMART LIGHTING TECHNOLOGY



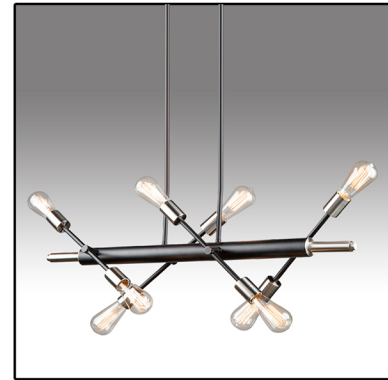
Sunburst



Bridgetown



Lugano



Truro



Artistry



Smart Flushmount



Tote



Coco



Perris



Rhythm [BK]



Rhythm [BG]



## **Install**

Install the device in your luminaire



## **Download**

Download the app



## **Connect**

Connect your phone

# Easy Setup

# Unlimited Functionality at Your Fingertips



ON/OFF



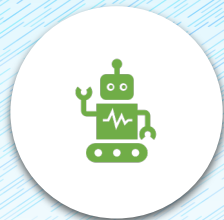
DIMMING



SCHEDULING



TAP-TO-RUN



AUTOMATION



VOICE  
COMMANDS



PHONE  
WIDGETS



HOME  
MANAGEMENT

# Make Your Home Smart!

The EZ-Link by Artcraft is a great way to add your new chandelier into your Smart Home.

Please read the following notes to make sure it is compatible with your home.

The EZ-Link establishes a connection with the internet via a 2.4 GHz wireless connection to the router. When connecting to the luminaire, a 2.4 GHz WiFi connection will be necessary. Once the initial connection is made you may resume using your 5 GHz WiFi.

---

To maintain connectivity to the EZ-Link, the power to the light switch should remain on even if the lights are turned off from your phone.

---

Multiple dimmers or Smart devices installed on the same luminaire should be avoided as the different devices can interfere with each other. It is not recommended to install multiple devices on the same luminaire.

---

This model of the EZ-Link is designed to handle wattage loads between 10 and 100 watts. Please read the following to know which type of light bulbs should be used with your fixture to ensure compatibility:

### **Single Bulb – Incandescent light bulb**

Most LED bulbs are under 10W, below the specified threshold.

### **2 to 12 light chandelier – Dimmable LED light bulb (up to 100W total)**

Please note that light bulbs vary in dimming quality.

We have found that filament style LED lights will sometimes flicker when dimmed to very low brightness.

# Warranty

The EZ-Link unit is warrantied for 5-years from purchase date.

Should the EZ-Link fail due to any manufacturer's defect, please contact your retailer for replacement of your EZ-Link device at no charge.

This 5-year warranty is applicable to the EZ-Link device – it does not apply to any other components of the luminaire, any labor or any other costs that may have been incurred.