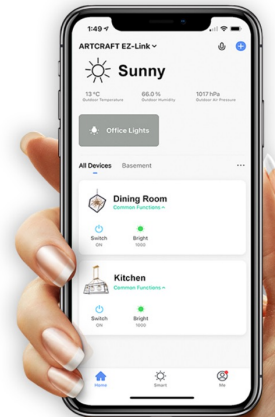




**EZ-LINK**  
SMART LIGHTING

# *INSTALLATION MANUAL*





# Congratulations!

Congratulations on your purchase of the EZ-Link by Arcraft. This will enable you to add your new Chandelier to your growing Smart Home. Please use this guide to get started.

Collections Available with the EZ-Link	Page 3
Smart Home Compatibility	Page 4
EZ-Link Installation	Page 5
Downloading the App	Page 6
Linking Your Phone	Page 7 - 11
5 Smart Things to do With the EZ-Link by Arcraft	Page 12 – 20
Warranty	Page 21
End	Page 22

# COLLECTIONS AVAILABLE WITH EZ-LINK SMART LIGHTING TECHNOLOGY



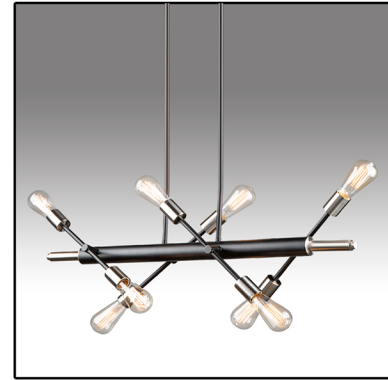
Sunburst



Bridgetown



Lugano



Truro



Artistry



Smart Flushmount



Tote



Coco



Perris



Rhythm [BK]



Rhythm [BG]

# Make Your Home Smart!

The EZ-Link by Artcraft is a great way to add your new chandelier to your Smart Home.

Please read the following notes to make sure it is compatible with your home.

The EZ-Link establishes a connection with the internet via a 2.4 GHz wireless connection to the router. When connecting to the luminaire, a 2.4 GHz WiFi connection will be necessary. Once the initial connection is made you may resume using your 5 GHz WiFi.

---

To maintain connectivity to the EZ-Link, the power to the light switch should remain on even if the lights are turned off from your phone.

---

Multiple dimmers or Smart devices installed on the same luminaire can interfere with each other. It is not recommended to install multiple devices on the same luminaire.

---

This model of the EZ-Link is designed to handle wattage loads between 10 and 100 watts. Please read the following to know which type of light bulbs should be used with your fixture to ensure compatibility:

## **Single Bulb – Incandescent light bulb**

Most LED bulbs are under 10W, below the specified threshold.

## **2 to 12 light chandelier – Dimmable LED light bulb (up to 100W total)**

Please note that light bulbs vary in dimming quality.

We have found that filament style LED lights will sometimes flicker when dimmed to very low brightness.

# EZ-Link Installation

- If an additional canopy has been included in the EZ-Link box, please use this canopy instead of the one that comes with the luminaire.
- An additional crossbar has also been provided with the EZ-Link and should be used instead of the crossbar that is included with the luminaire canopy.

Before installing the EZ-Link, please ensure that:

- All power going to the fixture has been shut off.
- All steps are being performed by a certified electrician.

The EZ-Link should be installed when connecting the luminaire wires and the supply wires. If not yet performed, remove the screws securing the canopy to the ceiling and expose the wires within. Disconnect the supply wires from the fixture wires.

1. On your EZ-Link, identify the input and output sides that are labelled on the device. Connect the wires on the “output” side (red wires) to the fixture wires using the wire nuts provided. Connect the wires on the “input” side (black & white wires) to the supply wires from the ceiling using the wire nuts provided.
2. Tuck the wires and the EZ-Link into the canopy and re-secure the canopy to the ceiling using the screws that were removed in step 1. Your device is now installed. You are now ready to connect to the fixture with your phone!



# Downloading the App

Now that the device is installed in your fixture, you are ready to begin setting it up. The EZ-Link uses the Smart Life app to connect your phone to your lights. For this section you will need the following:

- Cell phone
- Access to a 2.4 GHz WiFi connection (configured on your wireless router)

The Smart Life app is available on the Apple App Store and the Google Play Store. You can search for the app manually or scan the relevant QR code below and follow the link.

Play Store (Android)



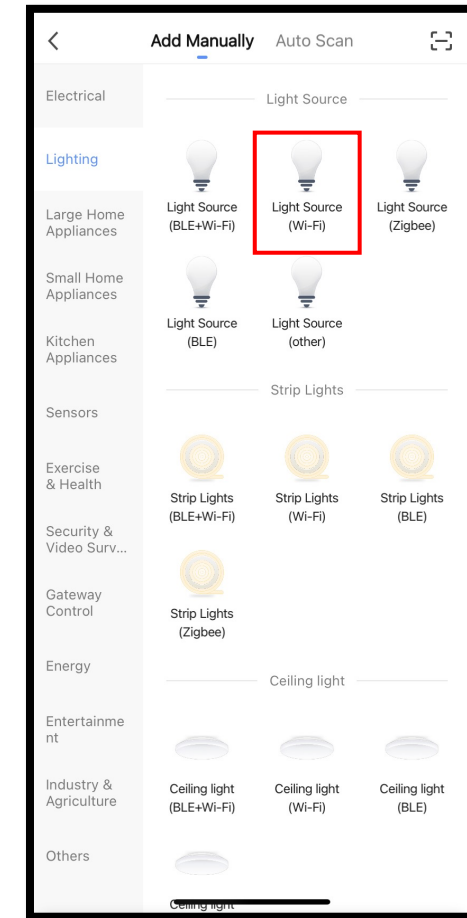
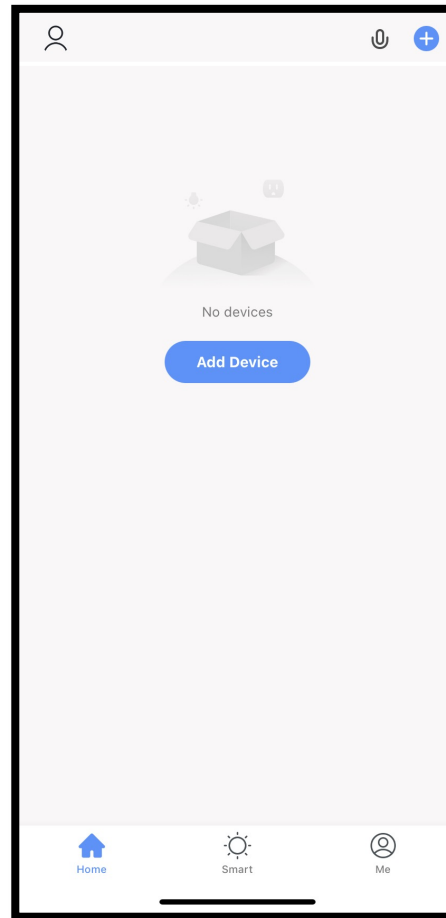
App Store (Apple)



Once the Smart Life app is installed you should create an account by registering your email and creating a password.

# Linking Your Phone

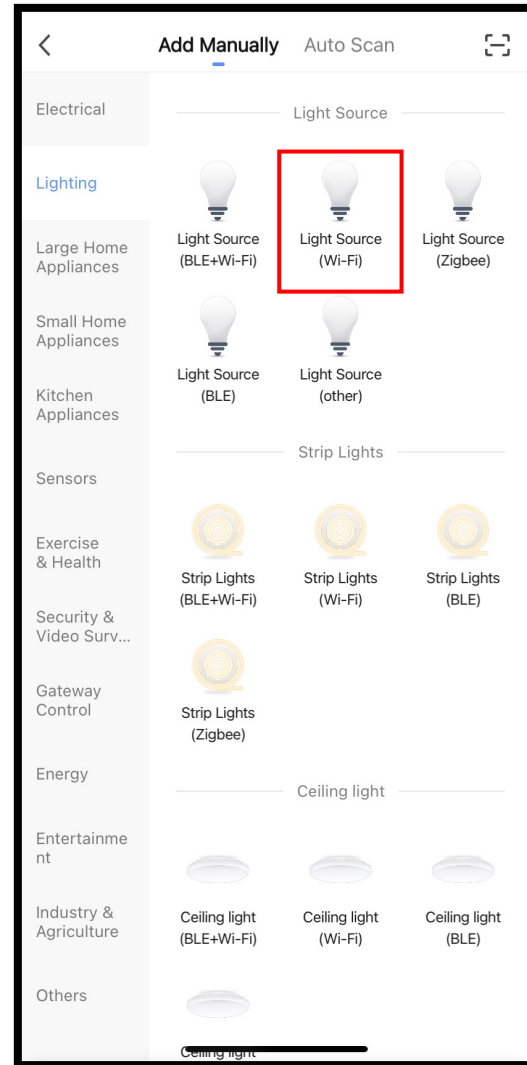
Once logged in, You should see the following on your app. Select the “Add Device” button or the plus button on the top right of your screen.



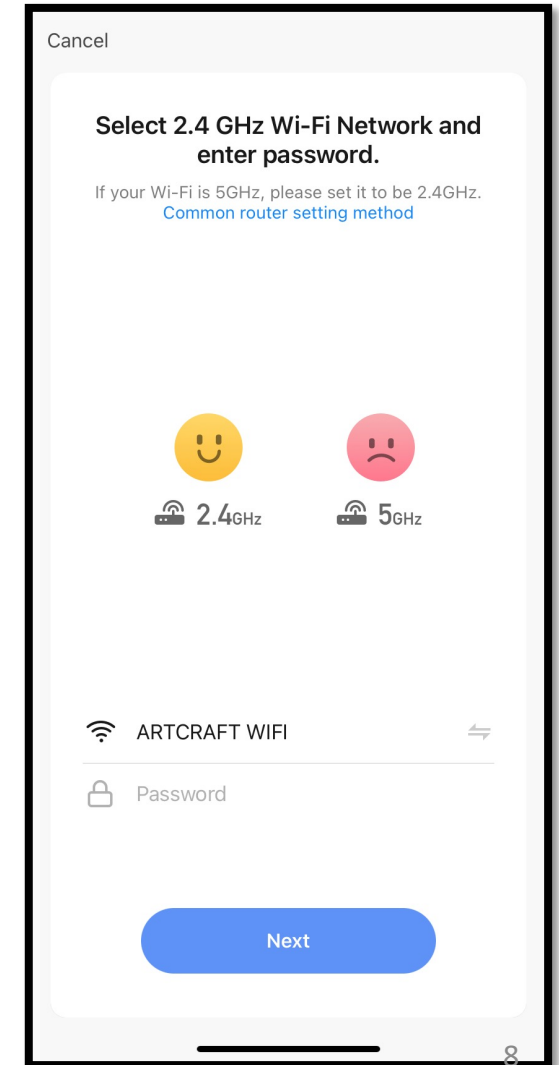
There are two options for how to connect to your device which are shown at the top as “Add Manually” and “Auto Scan”. If your device is already in pairing mode, you can use the Auto Scan feature to automatically detect the device, or multiple devices. Otherwise, please use the following steps to add manually.

# Linking Your Phone: Add Manually

1. Select “Lighting” from the menu on the left. From among the options that show up, select “Light Source (Wi-Fi)”, which should be on the top row in the middle.



2. You should now be asked to select the 2.4 GHz WiFi network you will be using and to enter your password. Once the setup is complete, you can resume using your regular WiFi.





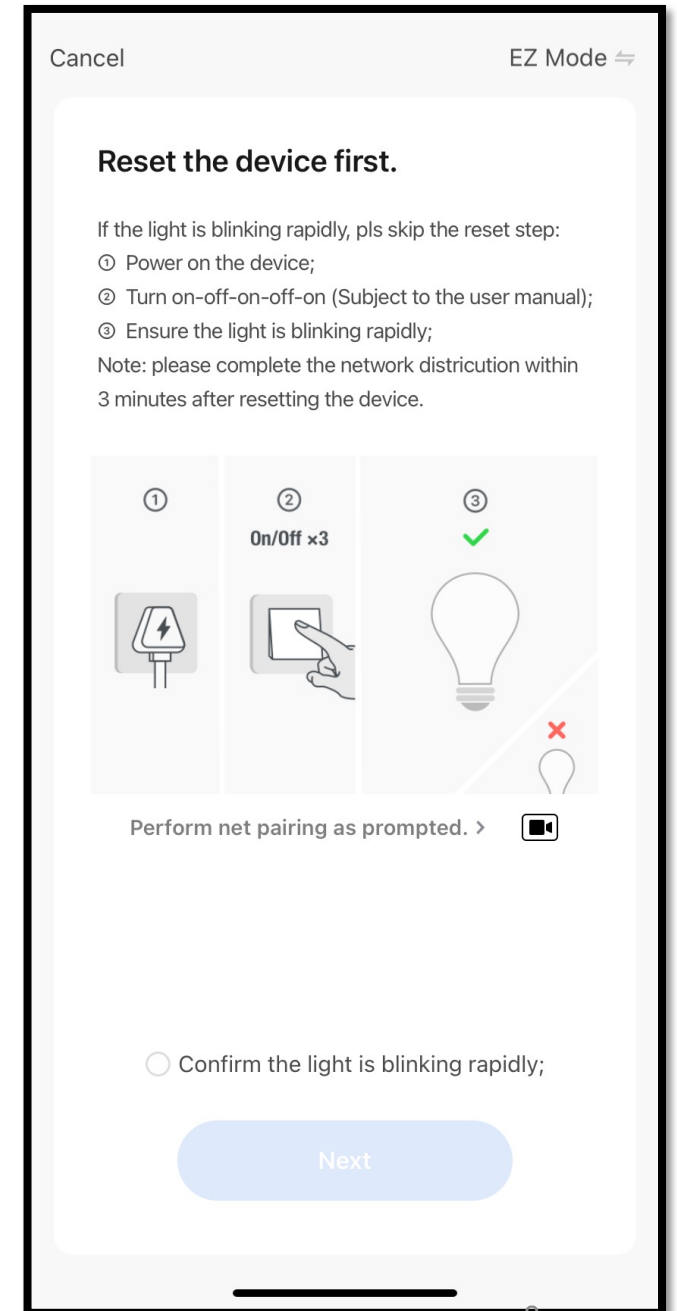
# Linking Your Phone: Add Manually

3. Follow the steps described on the screen to set your device into pairing mode.

Please note that some LED bulbs appear differently when they are put into pairing mode. It is possible that the lights do not blink fully or have almost imperceptible blinking. If you have followed the instructions as written on the screen, then your device should be in pairing mode now.

With your device in pairing mode, you may select the circle “Confirm the light is blinking rapidly” and click next.

NOTE: Turning the device on/off to enter pairing mode should not be done too rapidly. Go at a measured pace of 1 second in between on/off.



# Linking Your Phone: Add Manually

You are now fully set up to start using the EZ-Link! We advise you to take some time with the app to become familiar with all its capabilities.

Read the “5 smart things you can do with the EZ-Link” Section for some guidance on what the EZ-Link can do.

# Linking Your Phone: Auto Scan

If your device has already been set up on your network (perhaps another family member has already gone through the pairing process) then you may use the Auto Scan option.

1. Select “Auto Scan” at the top of the page. If the device is set up and ready to be paired, your device should appear within 1 to 2 minutes.
2. Select your device and pair with it.

You are now fully set up to start using the EZ-Link! We advise you to take some time with the app to become familiar with all its capabilities.

Read the “5 smart things you can do with the EZ-Link” Section for some guidance on what the EZ-Link can do.

# 5 Smart things to do with the EZ-Link by Artcraft



On/Off and Dim



Scheduling, Tap-to-Run, & Automation



Voice Commands



Phone Widgets



Home Management

1.

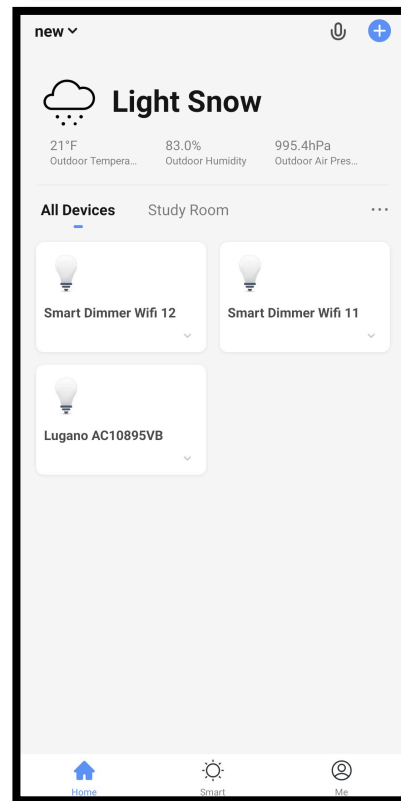
# On/Off and Dim

This is the bread and butter of the EZ-Link. Within the Smart Life app you should see the device you have paired with, as in picture 1, on you Home page.

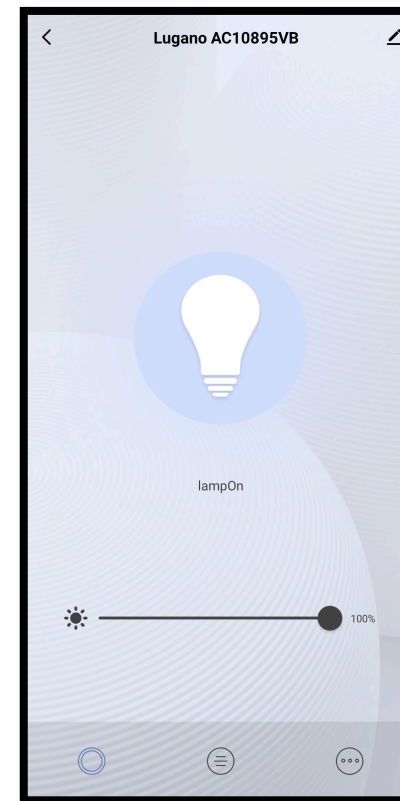
For on/off and dimming options, you can either:

1. Select the tile with your luminaire and be brought to picture 2, where you can tap the light bulb icon for on/off and move the slider for dimming
2. Select the arrow on the bottom right of the tile for a shortcut and be brought to picture 3, where you can select the power button tab to turn on/off, or select the dimming tab where you can use the slider for dimming

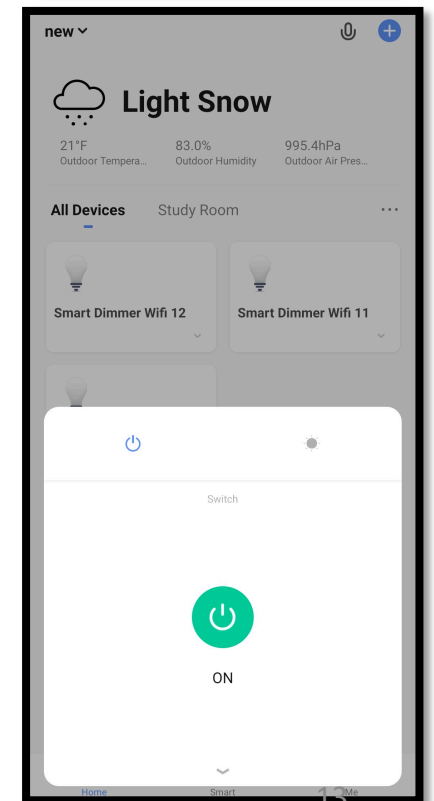
1 – Home



2 – Luminaire



3 – Shortcut



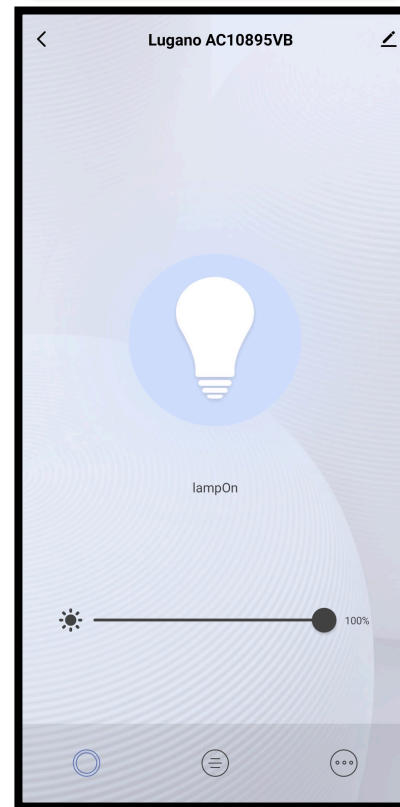
2.

# Scheduling, Tap-to-Run, & Automation

With the EZ-Link you can set schedules for your lights and even automate the lights based on conditions such as your location or the weather. Let us begin with scheduling.

While on the Luminaire page, select the 3 dots on the bottom right of the screen. From here you have the option to set a schedule or a timer. Select “Schedule” to be brought to the scheduling page, shown in picture 3, which gives you full control over the scheduling of your lights.

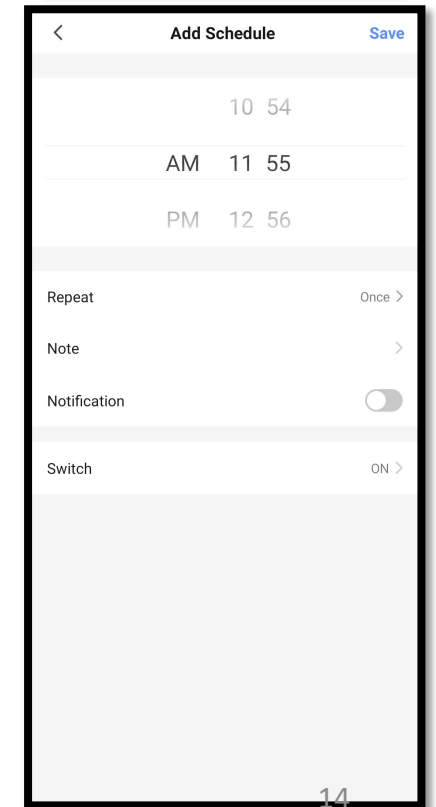
1 – Luminaire



2 – More Option



3 – Schedule



2.

## Scheduling, Tap-to-Run, & Automation

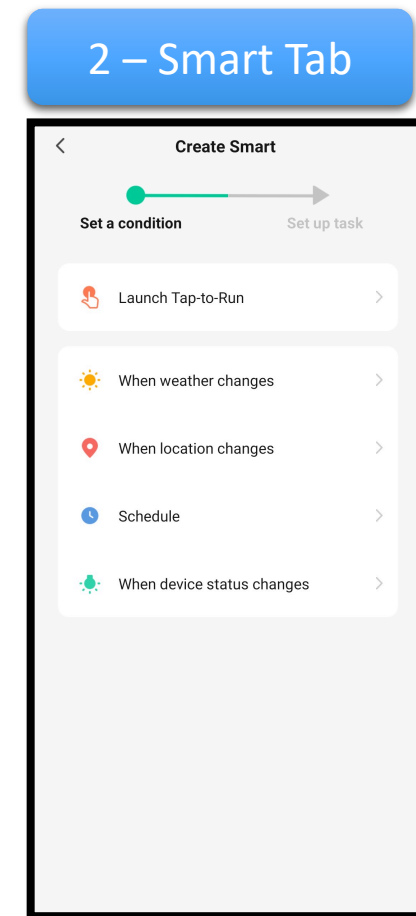
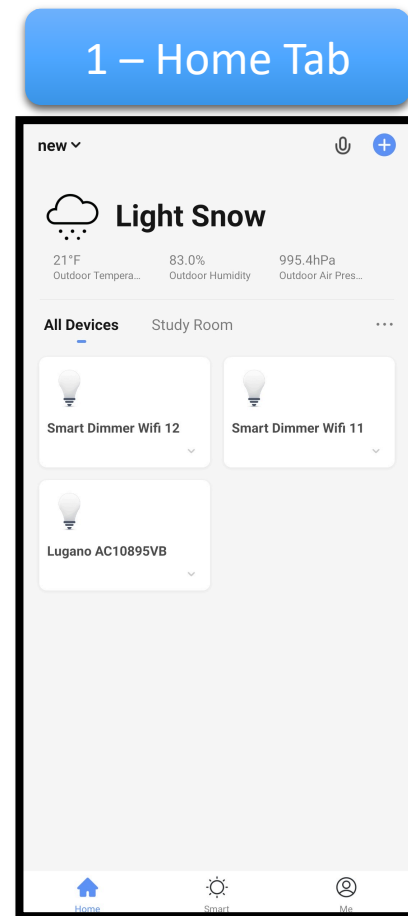
Tap-to-Run is a feature to set shortcuts for specific desired functions. This can be used in many ways, such as for multiple units to turn on/off from one tap, or to set a shortcut for a dimming preference.

Automation is similar in the way that it is used for specific desired functions, however the difference with Automation is that you would set conditions to be met for the function to be performed automatically. An example of this would be “When I leave home, turn the lights off”. This would require the use of GPS functions on your phone.

2.

# Scheduling, Tap-to-Run, & Automation

The procedure for Tap-to-Run and for Automation both begin the same way. From the Home tab, select the “Smart” tab on the bottom middle of your screen, as in picture 1. If you have not created any Automations or Tap-to-Run then there should be nothing populating this screen. From here, select the plus sign on the top right corner of the screen. You should now see the menu shown in picture 2. From here, you can either choose to set a Tap-to-Run or set a condition for the automation. Follow the prompts from here to set up your desired function. Once completed, any Tap-to-Run functions or Automations will appear in the Smart tab.





3.

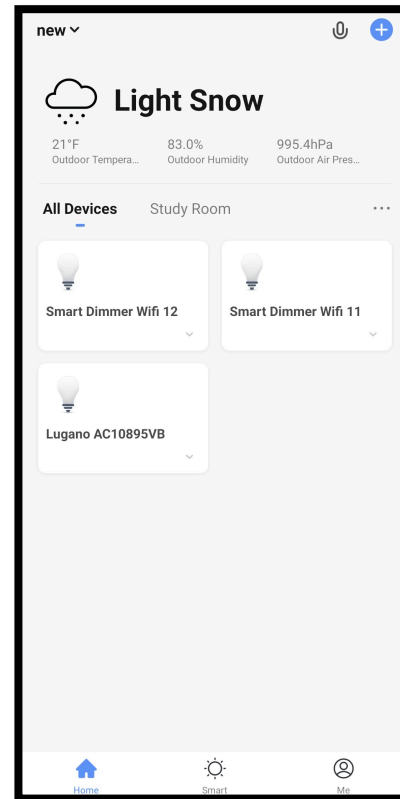
# Voice Commands Android

To set up voice commands, you must first pair your device with a 3<sup>rd</sup> party voice service such as Alexa or Google Assistant. From the Home page, select the “Me” button on the bottom right of the screen. For Apple products, refer to the following page.

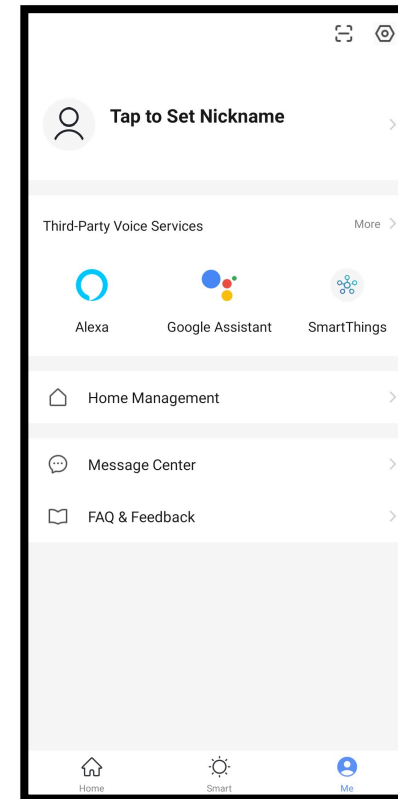
From here you can select your preferred service under the “Third-Party Voice Services” tab or select “more” for more options.

Once your service is selected, follow the instructions on your screen to complete the setup.

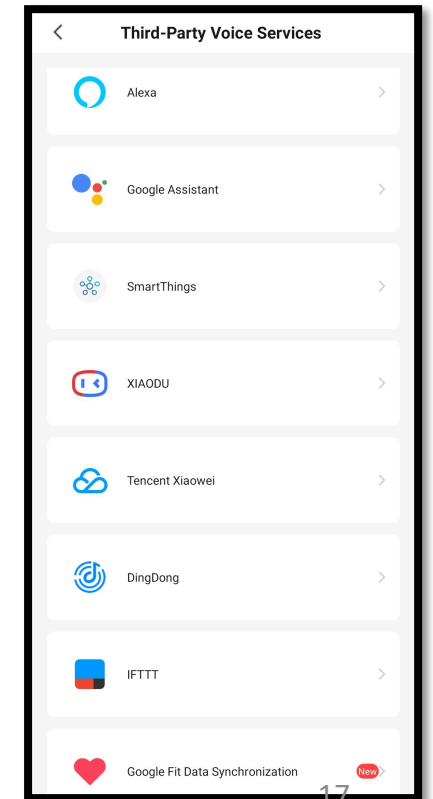
1 – Home



2 – “Me” Tab



3 – More



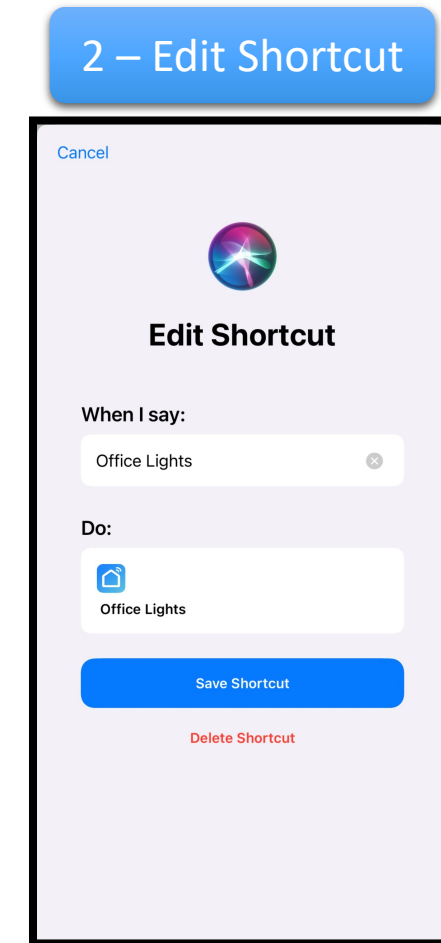
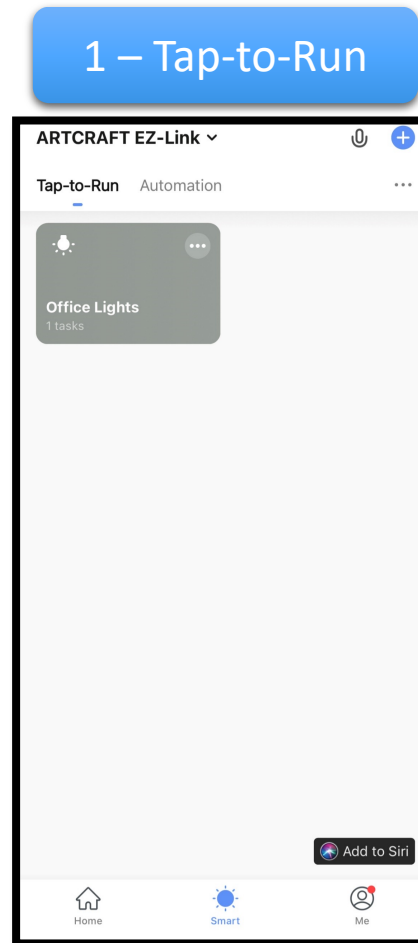
3.

# Voice Commands Apple

Voice commands with Apple are limited to tap-to-run functions that you have created. Once a tap-to-run function is created, select the “add to Siri” button that appears near the bottom right corner as in photo 1.

From the “Edit Shortcut” screen seen in photo 2, you can set the voice command and its function.

Any Siri functions that have been added can be found on the Smart Life Home tab or in the Shortcuts app.



4.

## Phone Widgets

Widgets can be used with Android and Apple phones to set shortcuts for a desired function on your home screen. This way, you do not even need to open the Smart Life app to control your lights.

On Android devices, simply open your widget menu and locate the Smart Life section to select your preferred widget.

On Apple devices, from the “tap-to-run” menu, once you have created function you can select the button that says “add to Siri” and follow the directions.

5.

# Home Management

If you have multiple Smart Devices in different rooms of your house, or even in different houses, you can organize and manage this within the Smart Life app.

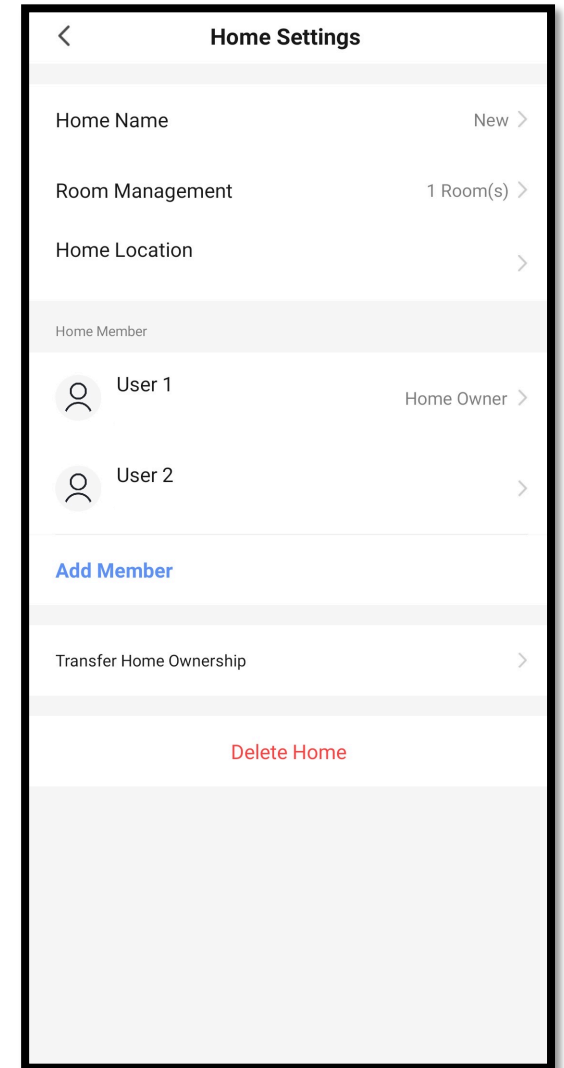
If you have already set up a Home with a Smart Device, from the Home tab in the Smart Life app you can select the arrow on the top left corner of your screen to open a drop-down menu. For the menu you can either select “Home Management” to go into the Home Management menu, or you can change which home you have open by selecting that Home.

This same menu can be accessed by going into the “Me” tab on the bottom right of the Home screen of the Smart Life app and selecting “Home Management”.

From the Home Management menu, you can:

- Manage a previously created Home
- Create a new Home
- Join a Home

Once a Home has been created, you can access it from the Home management Menu and edit the settings there. This is also where you would **add members** to the home. Members must be added to the home in order to share the connection with the EZ-Link and allow others to control the lights.



# Warranty

The EZ-Link unit is warrantied for 5-years from purchase date.

Should the EZ-Link fail due to any manufacturer's defect, please contact your retailer for replacement of your EZ-Link device at no charge.

This 5-year warranty is applicable to the EZ-Link device – it does not apply to any other components of the luminaire, any labor or any other costs that may have been incurred.

END

We hope this quick guide to the EZ-Link has helped you get started in setting up your Smart Home. If you have any additional questions, please consult the FAQ & Feedback section of the Smart Life app, which can be found on the “Me” tab as seen below.

This guide has only scratched the surface of what the EZ-Link is capable of. For more useful tips on what you can do using the Smart Life app, there are plenty of Smart Home guides and tools online that can help you make the most out of your Smart Home.

For anything else, you can contact us at our website, [www.artcraftlighting.com](http://www.artcraftlighting.com).

